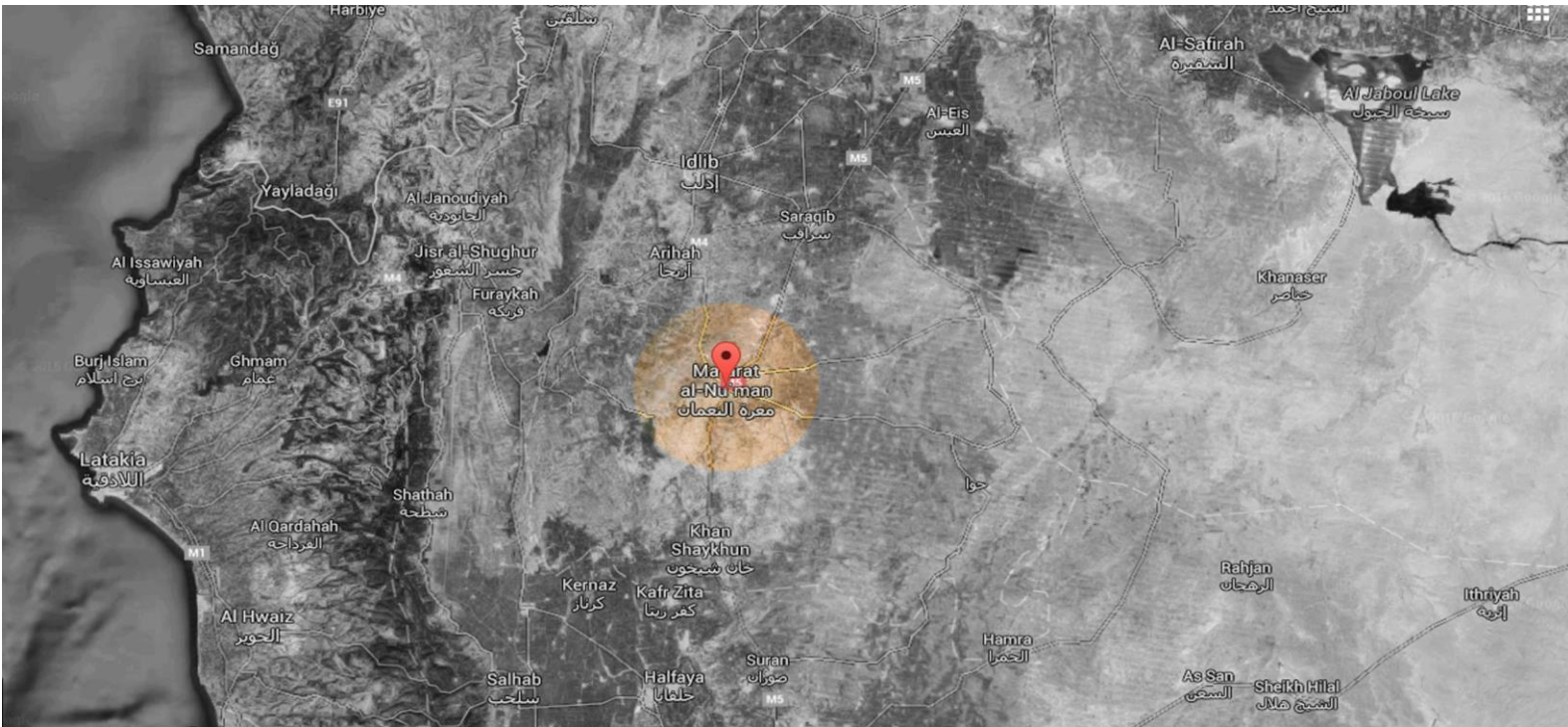


## The Day After Heritage Protection Initiative

### Site Monitors Project

### Site Monitoring Report on Al-Zeer Palace



The Al-Zeer palace is located 17 km west of Ma'arrat Al-Nu'man in Ma'ar Tamater village. The historic building is comprised of several rooms built from large limestone masonry. Weathering/environmental effects caused the ceiling to collapse. Its strategic location on an elevation affords it an excellent vantage point and exposes the vast open spaces around it.

It was built sometime during the late Roman/early Byzantine period. Some Islamic features are also evident in the top half of the walls.



The façade from the west shows some illegal excavations





Some damage caused by neglecting



Some damage caused by neglecting





Damage caused by weather factors from the west of the building







The southern side shows some damage caused by weather and neglect





The southern side of the building





The eastern side with some illegal excavations



North-east corner of building





The northern side of the building – illegal excavations





Inside the hole from the north side







An illegal excavation from the north

### Inside the Building

















On 7/6/2017, the Syrian Cultural Heritage Center team evaluated and documented all damages to this palace. Photos of the violations and weathering effects on the structure are included in this report.

Reported by:

Eng. Abdul Rahman Alyehia (Syrian Heritage Centre)

Mohamed al-Battal – Firas al-yehia

Arch. Khaled Hiatlih

**Site Monitors Project Coordinator**

**Dr. Amr Al-Azm**

