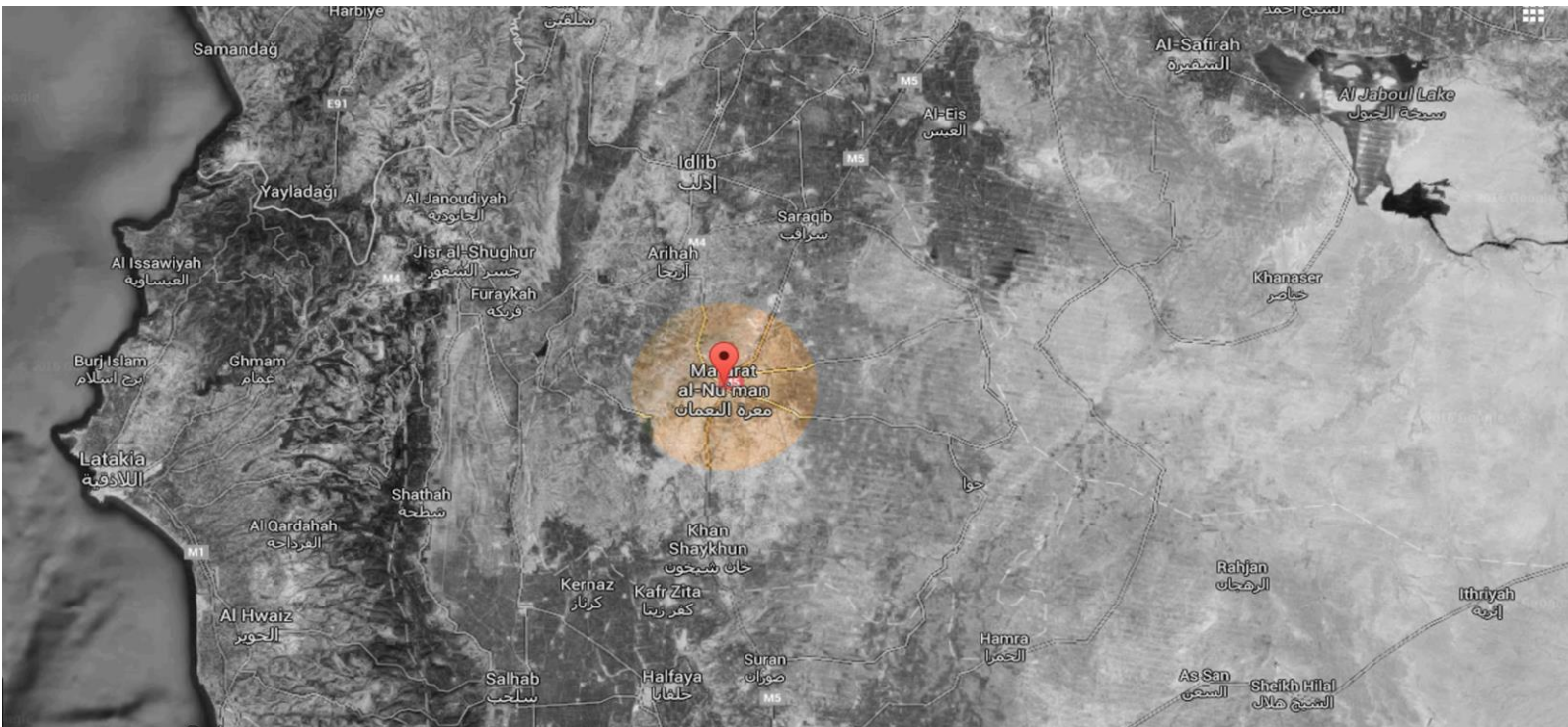


The Day After Heritage Protection Initiative

Site Monitors Project

Tell Hizareen Archaeological Site



The village and archaeological mound (Tell) of Hizareen is located 60 km southwest of the city of Idlib and 17 km west of Ma'arra. The mound, also locally known as “Tell Al-Qanater”, overlooks surrounding farmlands, and has not been officially excavated or investigated apart from a site survey conducted by the nearby Italian mission at Tell Afis. From finds recovered from the surface, the Tell appears to be a multi occupation site dating back to the fourth and third millenniums BCE in addition to Hellenistic, Roman and Byzantine periods as well.



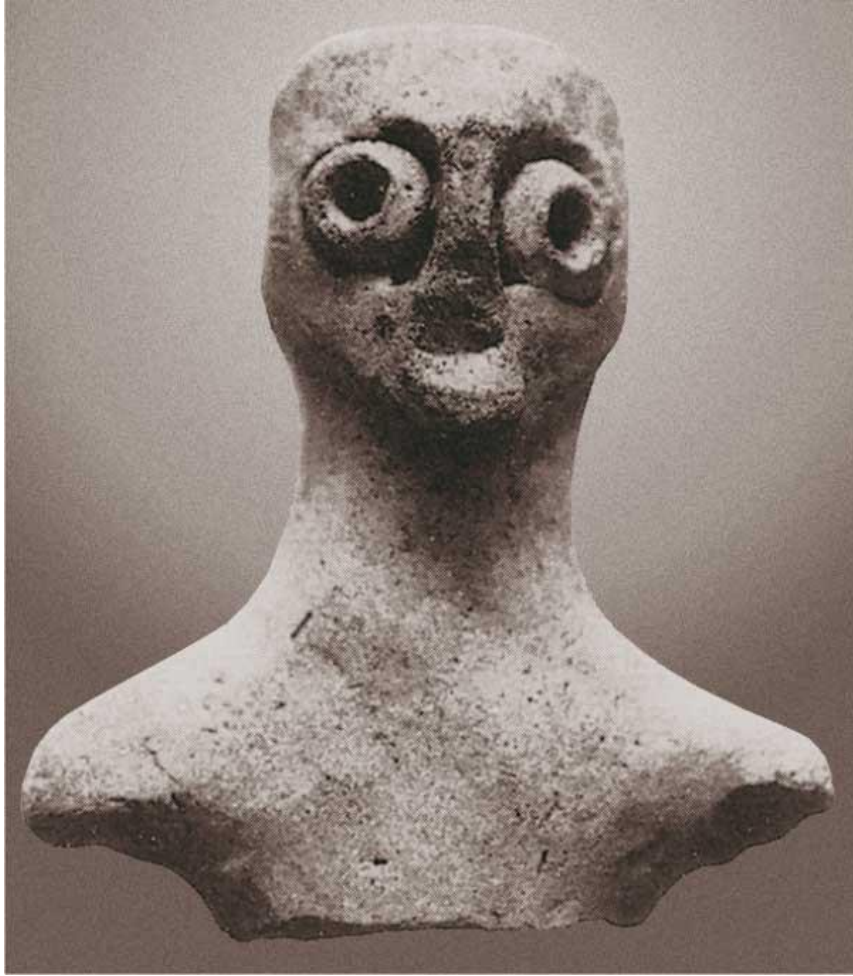


Since its designation as an archaeological site (in the 1980's), no fruit-bearing trees have been planted on the mound area in order to protect the site from root damage. However, farmers still use their land there to grow wheat and barley with minimal disturbance to the surface. All trees currently found on the mound were planted prior to 1980's and the mounds designation as an archaeological site.

The mound has suffered a lot of damage in recent years due to illicit digging, clearing activity, and excavation with heavy machinery, trucks, and metal detectors, as well as systematic bombardment of the site and nearby village. Clearing with heavy machinery was done for the purpose of reclaiming land in the mound exclusion areas to plant fruit-bearing trees. During the site monitoring visit numerous pits and holes of varying dimensions were documented.



Objects and pottery sherds recovered from the surface of the Tell/mound



North East Corner (six looting pits/holes and other digging activity of varying dimensions were documented).

Digging activity 1 (is a road that extends east-west)

Dimensions: Length 52m, Width 3.20m, Depth 1.20m



Digging activity 2

Dimensions: Length: 2.2m, Width: 1.60m, Depth: 1.10m



Digging activity 3
Length: 2m - Width: 2.65m - Depth: 1.10m



Digging activity 4
Length: 3.20m - Width: 2.10m - Depth: 1m



Digging activity 5
Length: 4.80m - Width: 3.50m - Depth: 1m



Digging activity 6: Length: 4.80m, Width: 4.25m, Depth: 80cm



East side of the mound: numerous pits/holes of varying depths, some very large.



Digging activity 7

Length: 1.40m - Width: 1m - Depth: 80cm



Digging activity 8

Length: 5.20m - Width: 3.25m - Depth: 10.8m



Digging activity 9

Length: 3.40m - Width: 3.30m - Depth: 1.90m



Digging activity 10

Length: 5.5m - Width: 4.10m - Depth: 1.5m



Digging activity 11 is a trench that extends north-south

Length: 24m - Width: 3.5m - Depth: 4.5m



Digging activity 12

Length: 4m - Width: 2.70m - Depth: 4.5m



Digging activity 13

Length: 2.70m - Width: 3.6m - Depth: 4.5m



Digging activity 14 (looting pit)
Length: 4.15m - Width: 3.20m - Depth: 3.80m



Digging activity 15 (looting pit)
Length: 5.80m - Width: 3.5 - Depth: 4.2m



Digging activity 16 (looting pit)
Length: 1.20m - Width: 1.5m - Depth: 90cm



Digging activity 17 (looting pit)
Length: 6m - Width: 4.5m - Depth: 2.8m



Digging activity 18: (looting pit)
Length: 3m - Width: 2m - Depth: 1m



Digging activity 19
Length: 4.5m - Width: 2.5m - Depth: 1m



Digging activity 20 (an underground tunnel)
Length: 4m - Width: 1m - Depth: 80cm



Digging activity 21: (looting pit)
Length: 5.10m - Width: 1m - Depth: 1.15m



Digging activity 22: (Looting pit)
Diameter 2.4m - Depth 2.20m



Digging activity 23: (Looting pit)
Diameter 2.5m - Depth 2.2m
Note: There is a visible layer of charcoal





The charcoal layer is seen clearly in this photo.



Digging activity 24
Length 4m - Width 2m - Depth 80cm



Digging activity 25
Length: 2.10m - Width 1.20m - Depth 1.30m



Reported by:

Eng. Abdul Rahman Alyehia (Syrian Heritage Centre)

Arch. Khaled Hiatlih

Site Monitors Project Coordinator

Dr. Amr Al-Azm

