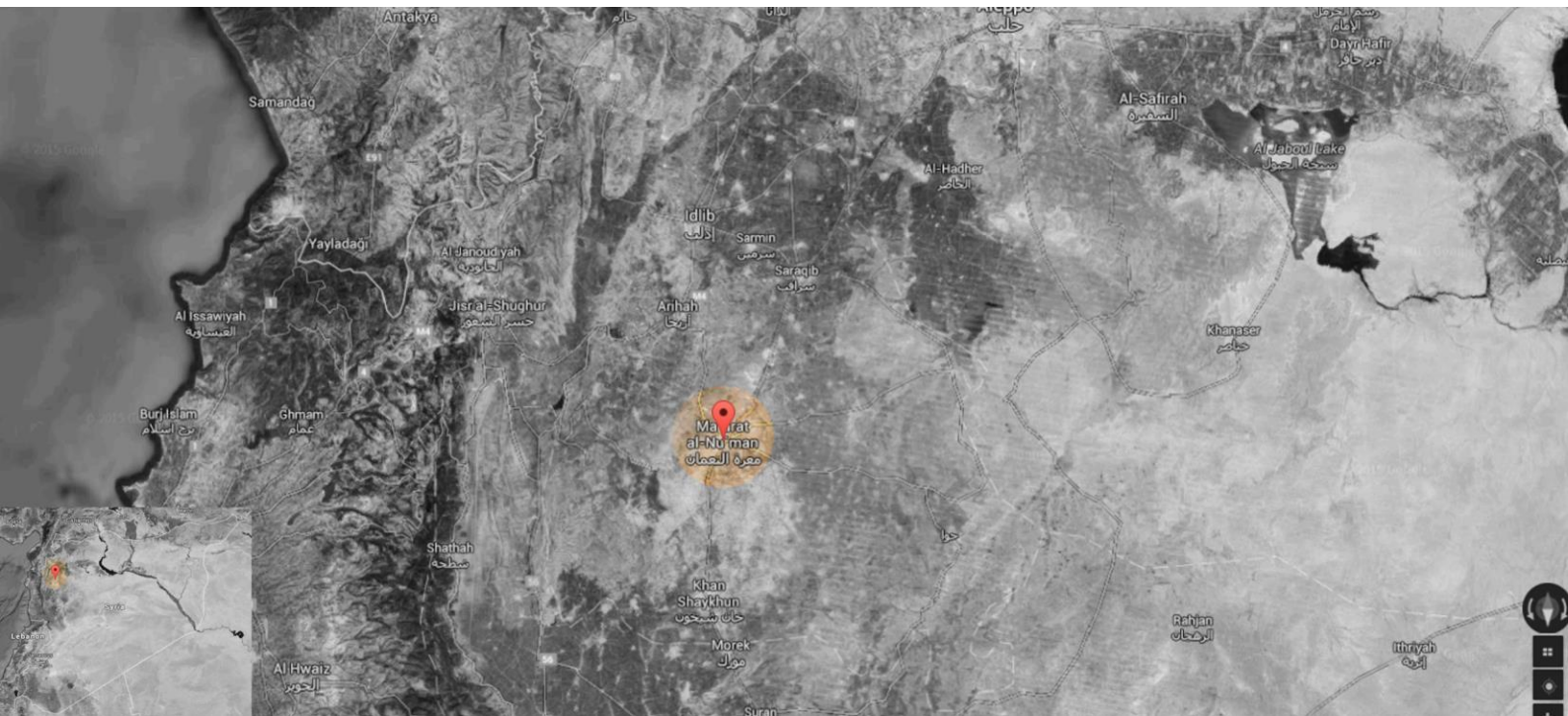


## The Day After Heritage Protection Initiative

### Site Monitors Project

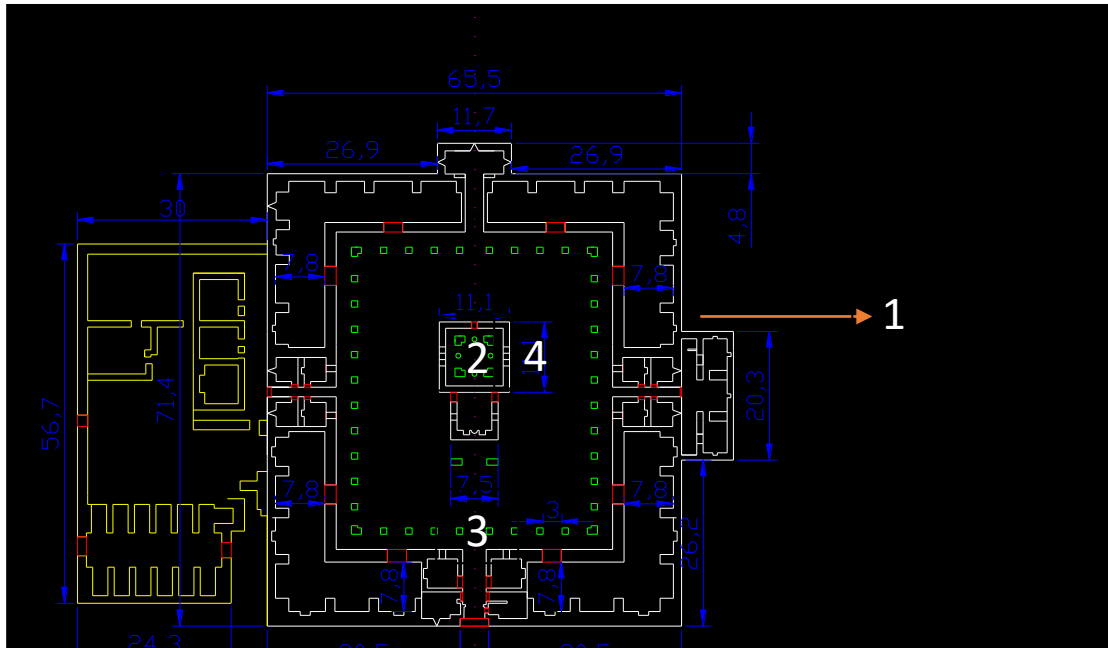
#### Damage Report Ma'arra Museum Regime Airstrike

June 15, 2015.



On Monday, 06/15/2015 at 10:35, the museum of Ma'arat al-Nu'man, located within Khan Murad Pasha, was hit by an airstrike. The museum contains an important mosaic collection from the nearby Dead Cities, which are designated as World Heritage Sites by UNESCO. The museum is composed of four wings, each wing in the form of the letter L. There is a corridor between each two wings leading to the opposite chambers. The building includes an open courtyard. In the middle of the courtyard, there is a *Tekkiye* and the mosque. The wings on the west side include public facilities, six storerooms, the *Tekkiye* bathroom, and the furnace.

The museum was struck with a barrel bomb, which hit the middle of the facility, exactly above the mosque. This resulted in the following damage:



A horizontal projection of the Ma'arra Museum (Khan Murad Basha).

[1] The east wing. [2] The mosque and impact point of the barrel bomb. [3] The main entrance. [4] The east wall of the mosque.



Severe damage to the mosque. The ceiling and the eastern side were completely destroyed and the southern front was partially damaged.



The south side of the mosque.



The southwest corner of the mosque



Damage to the *Tekkiye*. Total collapse of the ceiling and extensive damage of the walls. The *Tekkiye* contains Al-l'layah Library.



Books and manuscripts inside *Tekkiye*



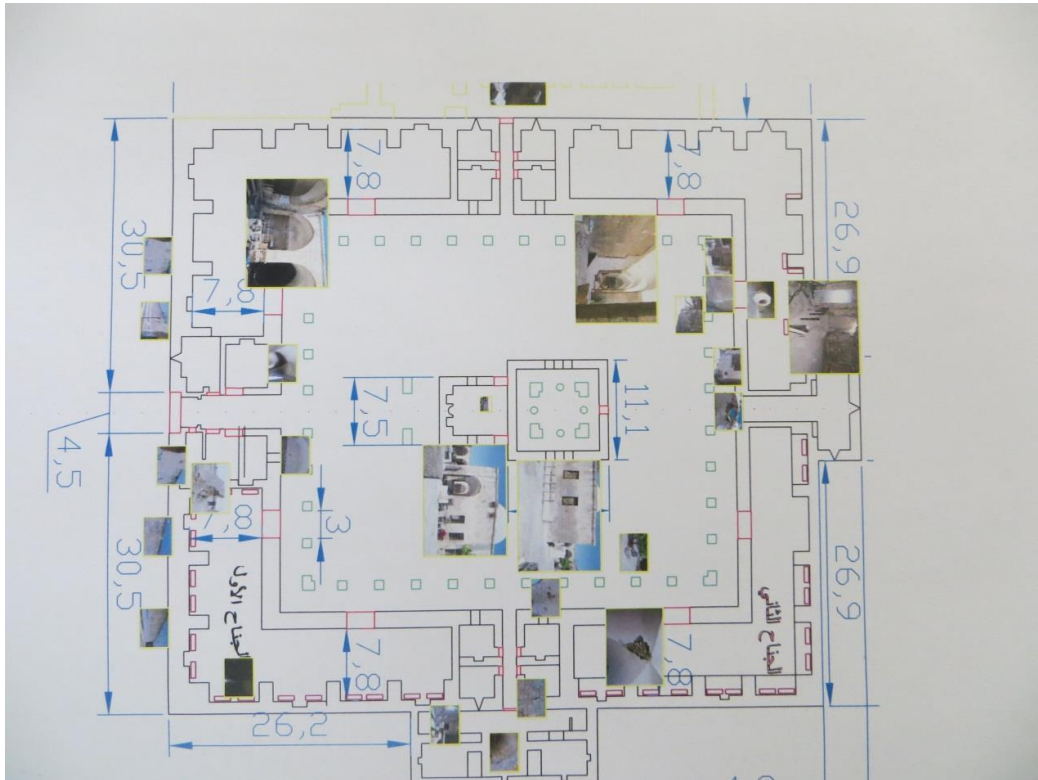
The damaged areas will deteriorate rapidly if no measures are taken to repair and stabilize the affected areas. A room used as an office for the employees is in danger of collapsing. The ceiling of the first wing is also in danger of collapse. Since arches hold up the structure, any collapse of the stones will compromise the structural integrity of the entire wing. It is therefore urgent that any deterioration of the arches be prevented through immediate action.



Severe damage to the covered gallery and parts of the east wing



Close up of the severe damage to the covered gallery and parts of the east wing



A schematic drawing of the museum



The northeast corner of the museum.

Extensive damage due to the force of the explosion causing major cracks to appear in the walls.



The east wing showing earlier repair done to the arch in the summer of 2014.



The main entrance to the museum (photo facing south).



The main entrance to the museum (photo facing south).





Stone objects and mosaic panels damaged by the blast.



Museum objects buried in the rubble in the rubble.



Sarcophagus and other stone objects damaged by the blast.



Sand bags scattered due to the explosion.



Sand bags used to shield objects on display in the museum courtyard scattered by the blast.



Mosaic panel covered with a layer of glue and cloth exposed after the fall of the sand bags due to the blast.



A basalt door, smashed by the explosion.



A basalt door, smashed by the explosion.

Reported by:

Eng. Abdul Rahman Alyehia (Syrian Heritage Centre)

**Site Monitors Project Coordinator**

**Dr. Amr Al-Azm**

