

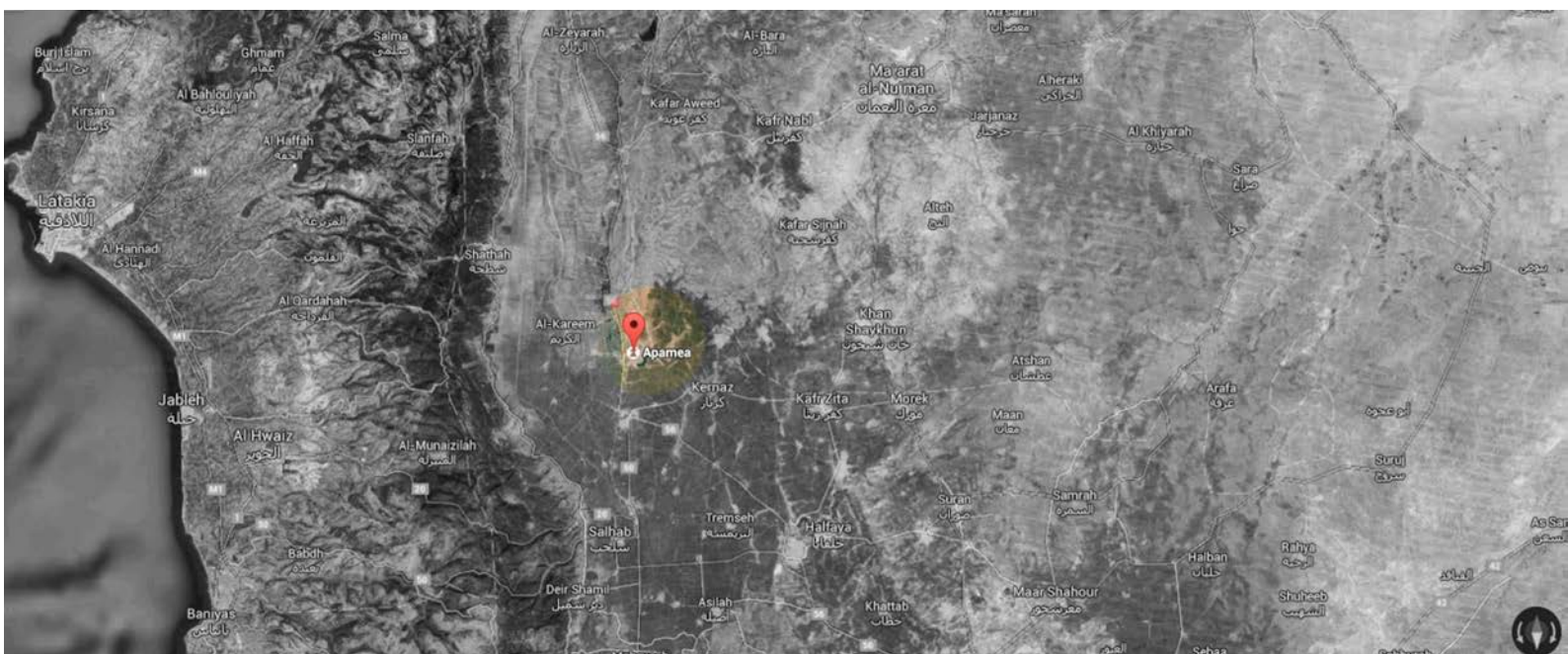
The Day After Heritage Protection Initiative

Site Monitors Project

Site Monitoring Report on

Apamea Dumpsite and its Removal

10/26/2017



Apamea

Apamea is an ancient Syrian city located 60 Km north of the Hama governorate. It is home to historical structures that date back to the Hellenistic, Roman, Byzantine, as well as Islamic eras.

Due to the war that has been ongoing for 6 years, the lack of a designated dumpsite, and the inability to move waste off site, waste has been accumulating and posing a public health risk as it is close to residential areas. It also impacts the environment and takes away from the beauty and culture of an ancient city that once attracted tourists from around the world to admire and learn about its significance in Syria's history.

A field survey of Apamea by the Syrian Heritage Center's site monitors revealed damage caused by:

- Illicit digging by individual looters.
- Shelling and gunfire by regime forces nearby in Al Madiq Castle (Al Habouseh).
- Vandalism .
- Weathering effects.
- 6 years of neglect.
- Dumpsite on the north side of the site.

To alleviate the negative impact on public health and the environment, efforts are being made to coordinate with the local council to examine the possibility of moving the dumpsite 800m east of Apamea where it would be out of sight from the ancient city. This project shall also engage other ongoing activities in the area to restore the infrastructure and basic facilities, raise cultural awareness on the need to preserve historical sites and invest in them to rebuild cultural life and the economy in the region.

Images of the site with the dumpsite in view below:









Looting Pics









Moving the Dump from the archaeological site





After Removal











Reported by:

Eng. Abdul Rahman Alyehia (Syrian Heritage Centre)

Site Monitors Project Coordinator

Dr. Amr Al-Azm

