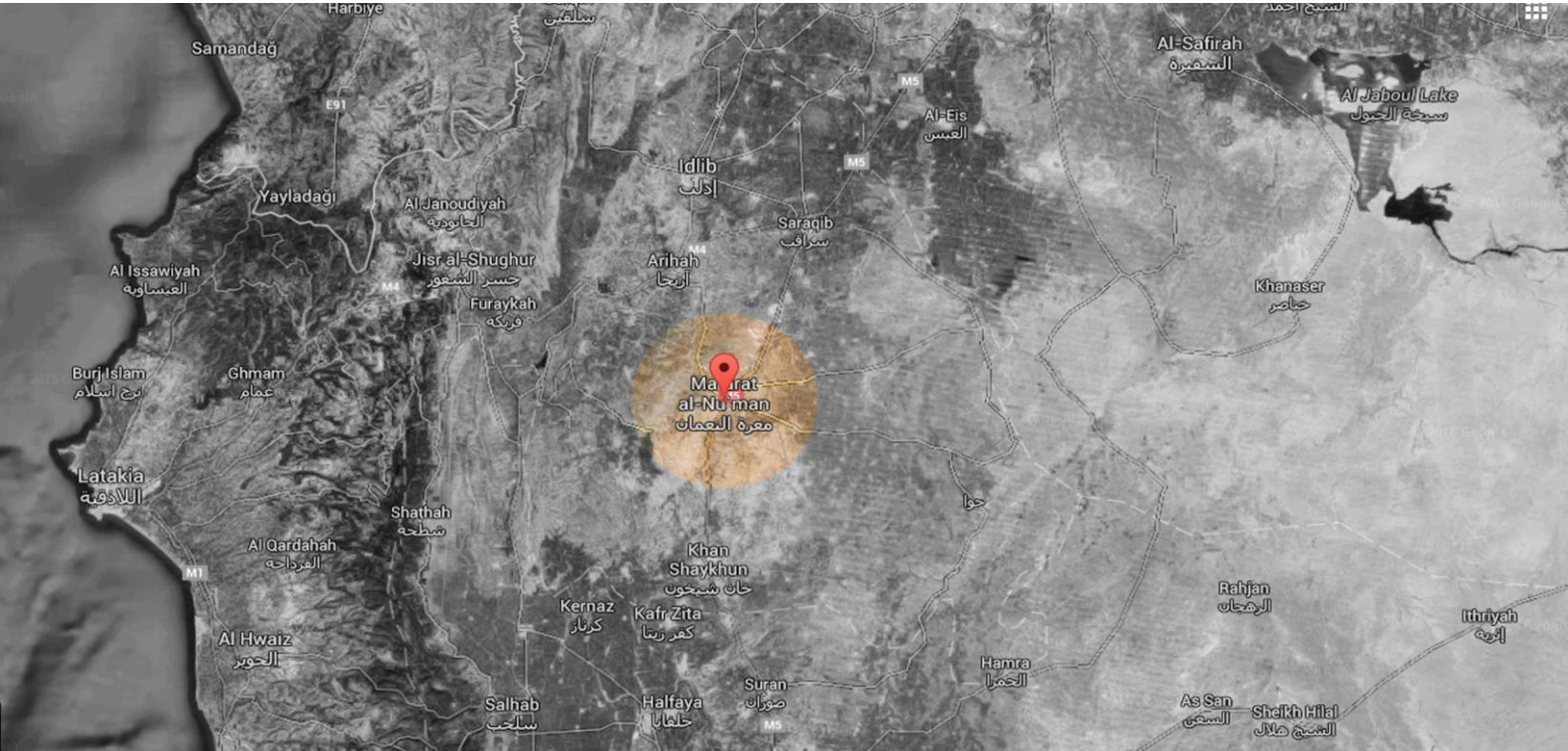


The Day After Heritage Protection Initiative

Site Monitors Project

Site Monitoring Report Tell Al-Tah (South)



The tell is located south of Al-Tah village along the road leading to Khan Sheikhoun. The tell is 500m long and 485m wide. Unlike other nearby hills, it has a modest elevation of about 20m. With the onset of the Syrian uprising and the state of anarchy that prevailed in the region, opportunists used heavy machinery for digging/looting and dredging activity on the site, leaving holes up to 12m deep, disturbing the soil layers. Tell Al-Tah (South) is registered as an archaeological site and protected by the Ma'arrat Al-Numan Department of Antiquities

A team from the Syrian Cultural Heritage Center and TDA-HPI, visited the site in June 2017 and took photos of visible damage and violations. We also happened to find a huge press made of basalt stone.















































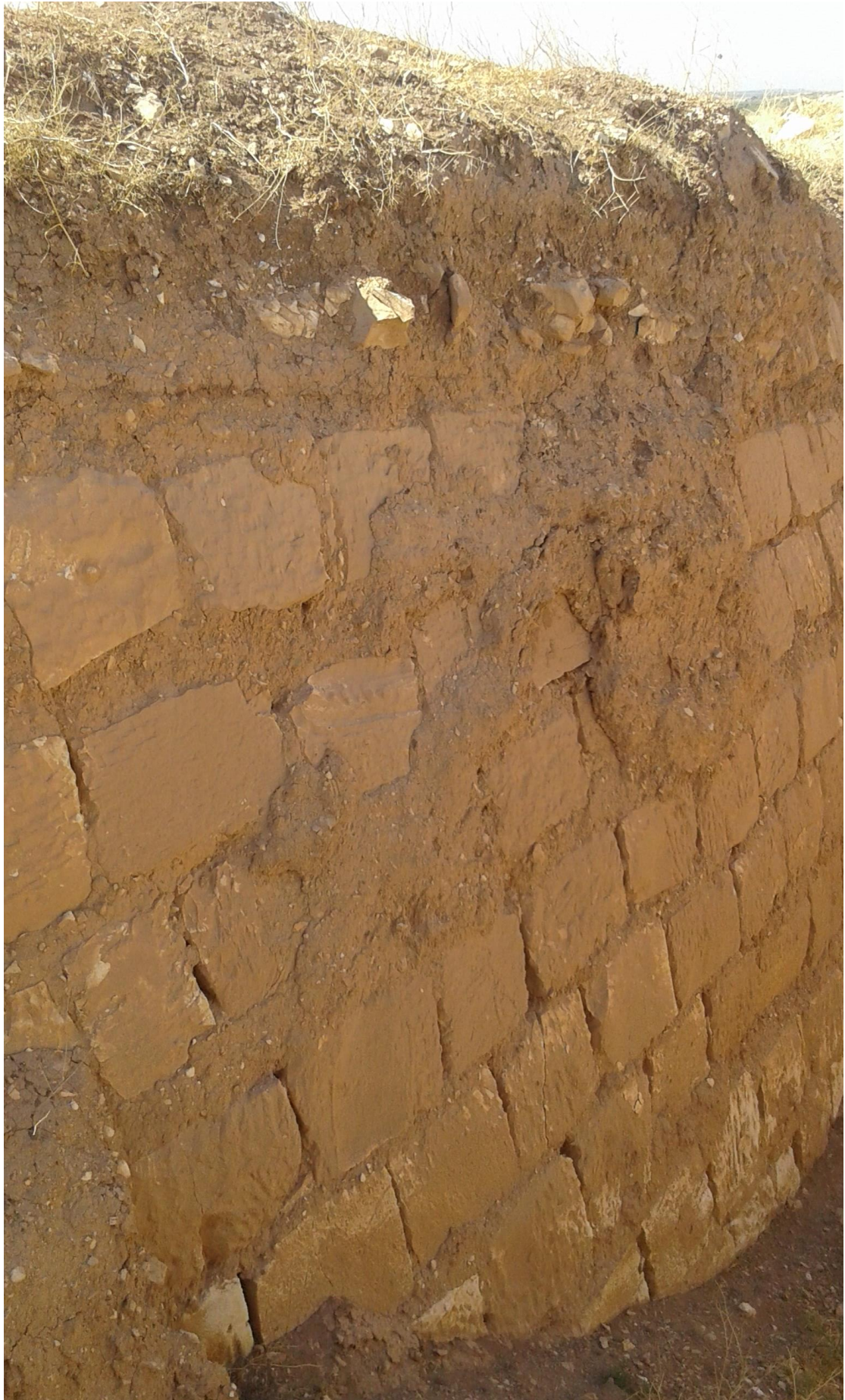








































Reported by:

Eng. Abdul Rahman Alyehia (Syrian Heritage Centre)

Mowaffaq Al-Tuwair - Arch. Ahmad Anan

Arch. Khaled Hiatlih

Site Monitors Project Coordinator

Dr. Amr Al-Azm

