

The Day After Heritage Protection Initiative

Site Monitors Project

Ma'arrat Al-Numan Museum (Khan Asa'ad Pasha)

Mid-Project Progress Report: Stabilization and Reinforcement of the North West Corner (entrance to the third wing)

May 1st 2018 - July 1st 2018



On January 2, two missiles from an airstrike on Ma'arrat Al-Numan Museum (Murad Pasha Caravansary) caused significant damage to the structure as described below:

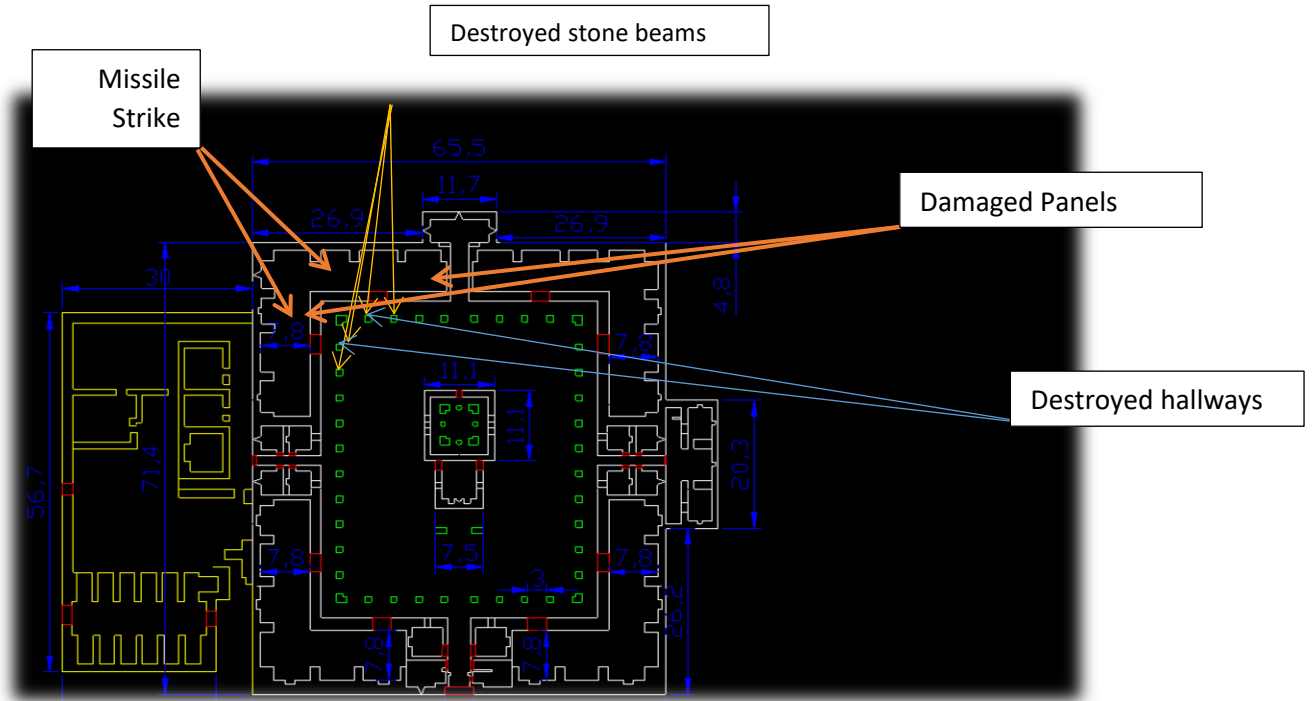
- 1- The north and west hallways of the third section were both destroyed. The two hallways had arched ceilings.

- 2- Three stone beams on the north side, along with two on the west, were destroyed .
- 3- Partial destruction of a sarcophagus placed on display in the courtyard after being transported from an area north of Ma'arrat Al-Numan in 1982.
- 4- The west wall of the hallway leading to the lavatories in the east has collapsed.
- 5- Structural damage in the north end of the third section.
- 6- Some clay amphorae that had been moved into the third section were destroyed.
- 7- Some mural paintings on the north and east sides of the hallway, across from the entrance to the third section from the north, were damaged. One painting near the west entrance fell to the ground.

The following phases of the Ma'arra Museum First Aid Emergency Support Project have been completed/are in progress:

Phase I: Complete an assessment plan with documentation (photos and plans submitted to UNESCO) which includes:

- 1- Full documentation of damaged areas, creating topography maps, and writing an incident report.
- 2- Assessing structural and artifact damage.
- 3- Devising plans to restore, preserve, and limit the spread of damage in consultation with the UNESCO expert (Salvatore Russo) .
- 4- Creating a floor plan and a front view of the damaged areas in the north and west .
- 5- Creating horizontal and vertical section views of the structure, the walls, and the arches.



Location of airstrike (2 missiles)



Prior to airstrike



Documenting the damage



Documenting the damage



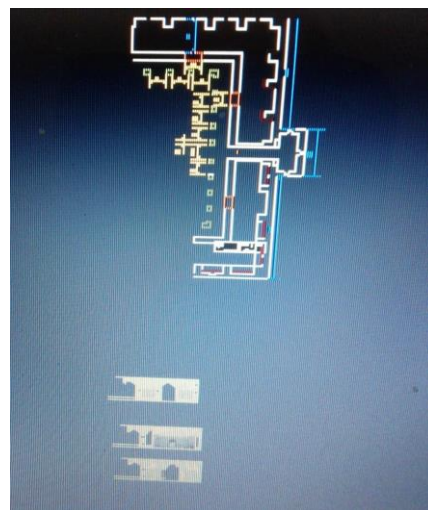
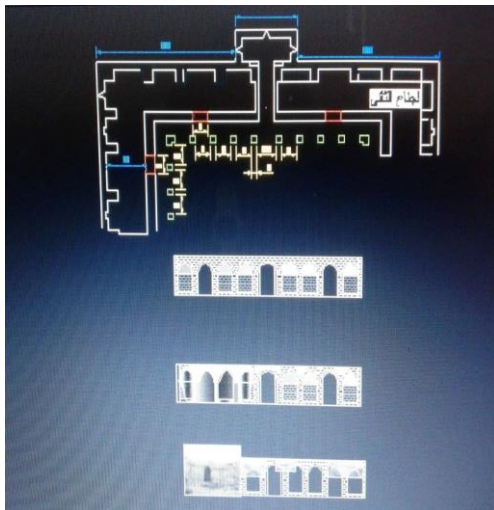
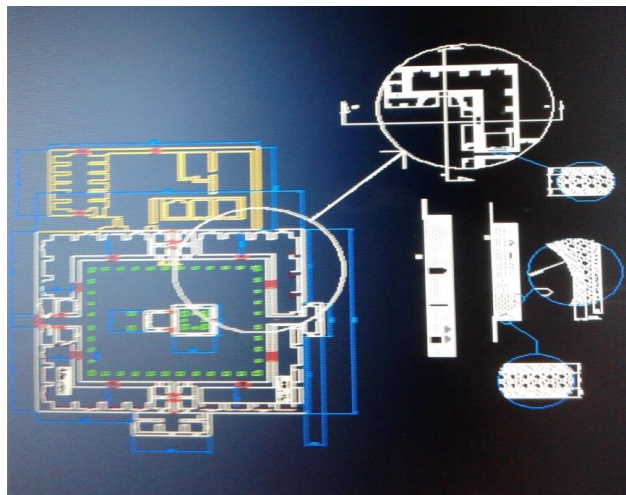
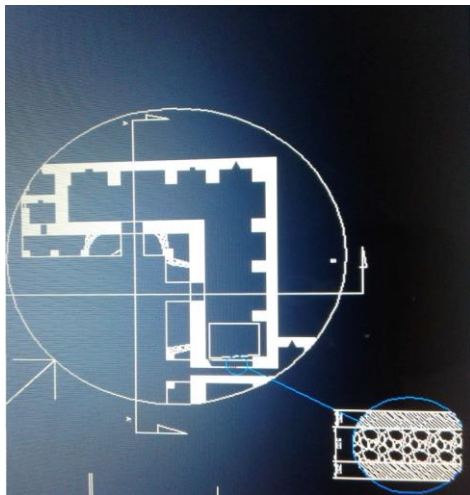
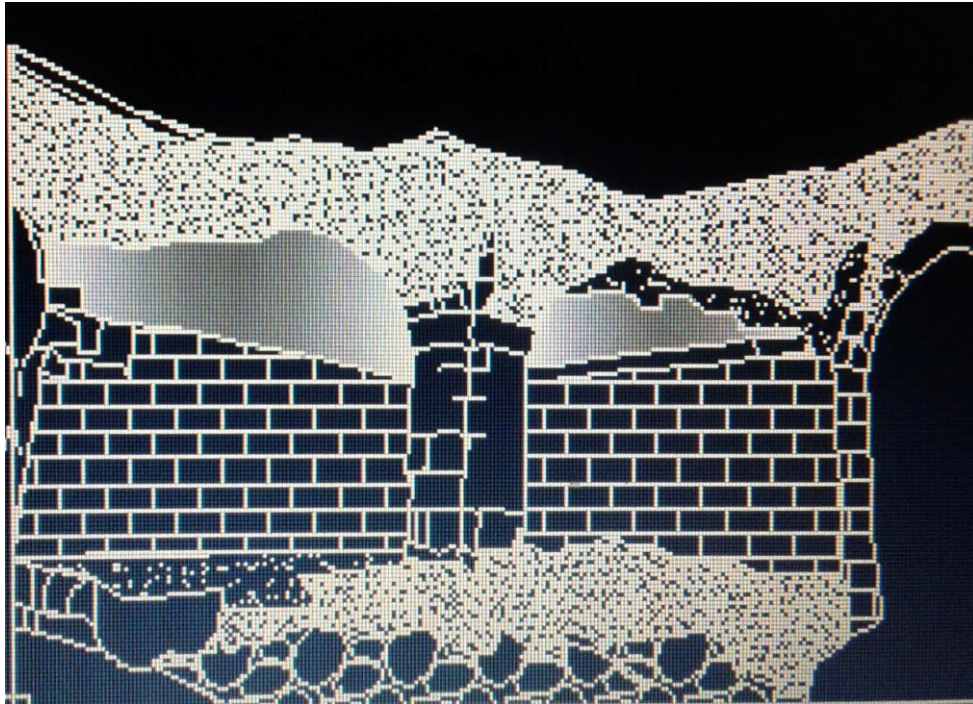
Documenting the damage



Documenting the damage



Documenting the damage



Horizontal and Vertical sections

Phase II: Implementation of the emergency stabilization plan devised in Phase I. Activity completed or in progress includes the following:

- 1- Clearing rubble and sorting out stones.
- 2- Manufacturing a model of the support system developed by the Ma'arra museum team and the UNESCO expert.
- 3- Begin reinforcing walls the same way that was done in the miniature model where knot-free Swedish whitewood beams, with a diameter of 20X20 cm, were used as well as others measuring 10X20 cm and 10X10 cm as shown in the attached sketch and according to the previously made miniature model.
- 4- Reinforce vulnerable areas and disassemble and reassemble some walls while adhering to scientific and artistic principles.

Clearing rubble and sorting out stones







Reinforcing damaged walls



Manufacturing the intervention model





Reinforcing and stabilizing damaged areas



Reported by:

- Eng. Abdul Rahman Alyehia (Syrian Heritage Centre)
- Arch. Khaled Hiatlih

Site Monitors Project Coordinator

Dr. Amr Al-Azm

