

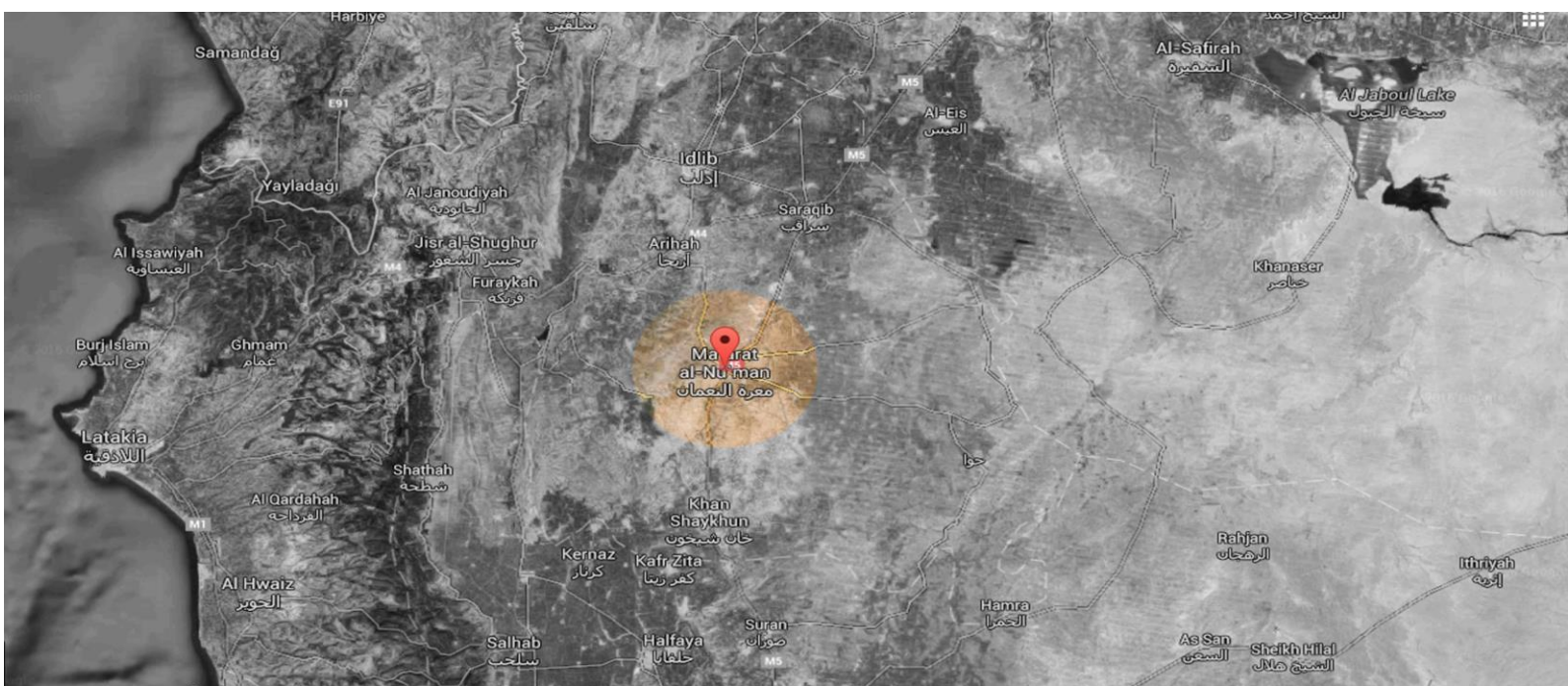
## The Day After Heritage Protection Initiative

### Site Monitors Project

### Final Report: Stabilization and Reinforcement of the North West Corner (entrance to the third wing) with a Timber Frame

### Ma'arrat Al-Numan Museum (Khan Asa'ad Pasha)

2 August 2018



**Project Name:** Emergency intervention at Ma'arrat al-Numan museum to reinforce the north west corner - entrance of the third wing.

**Location:** Ma'arrat al-Numan museum located in the city of Ma'arrat al-Numan in Idlib province

**Contractor:** Syrian Cultural Heritage Center

**Start date:** June 1st, 2018

**End date:** August 1st, 2018

**Project duration:** Eight weeks only

Funded and supported by the UNESCO Emergency Safeguarding of Syrian Cultural Heritage Project

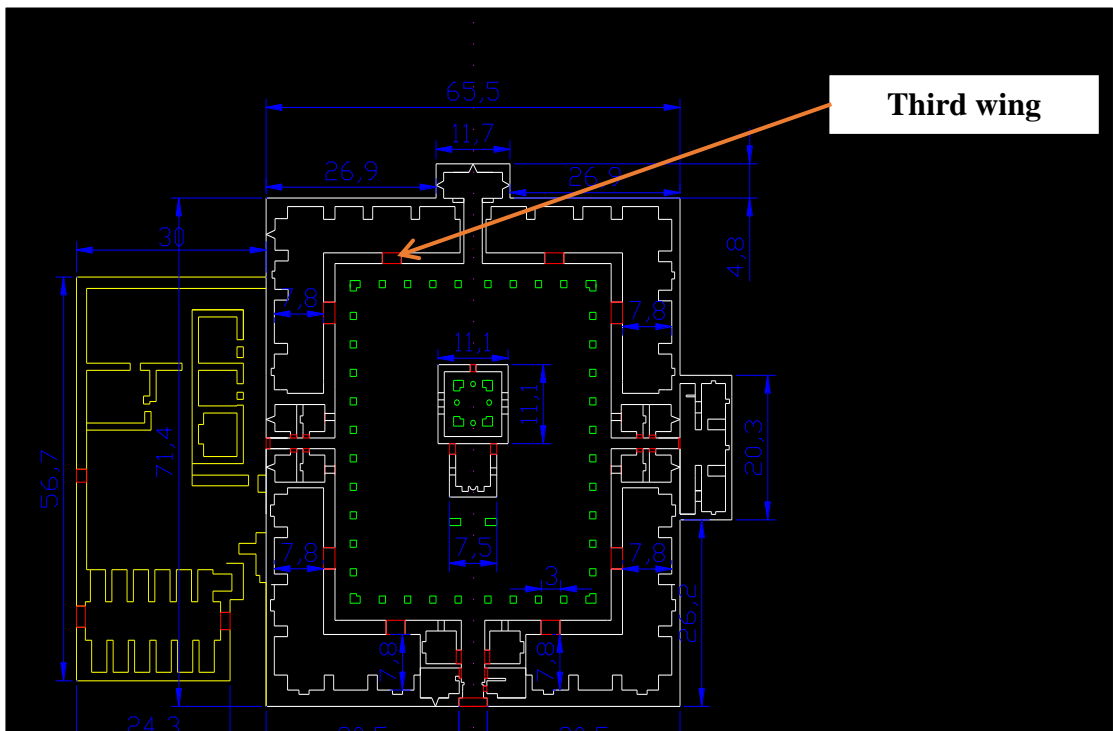
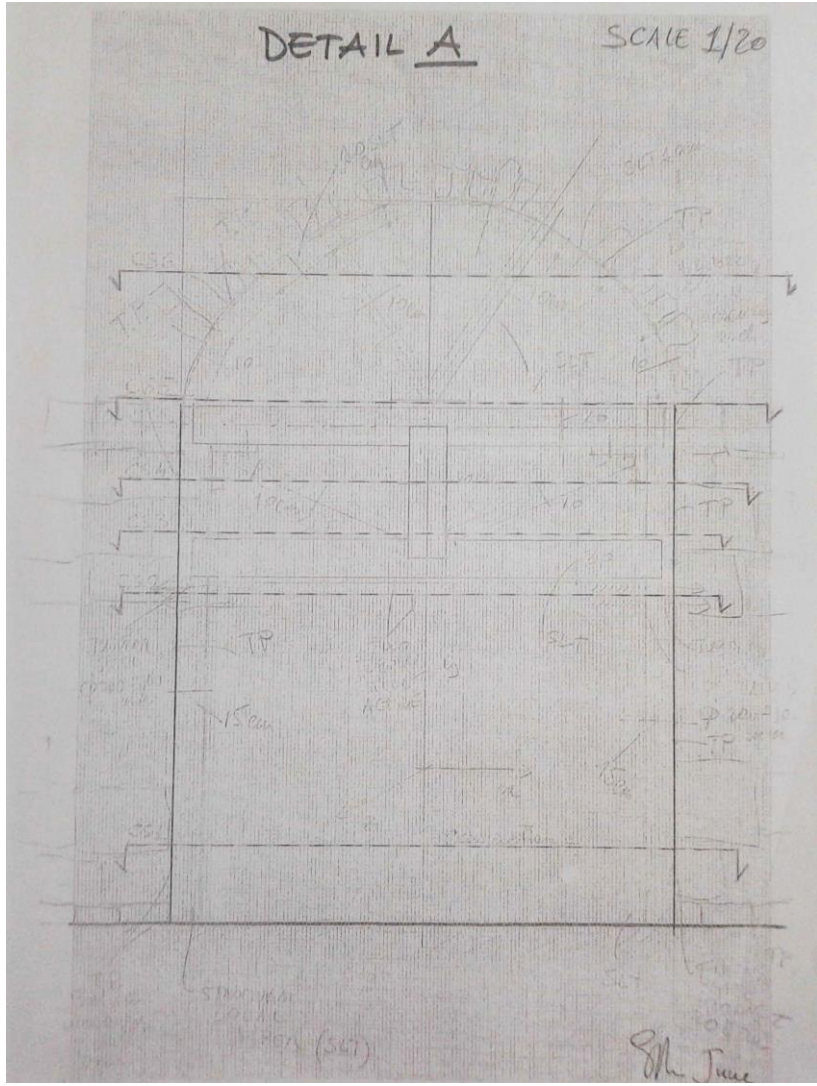
An air strike targeted Ma'arrat al-Numan museum (Murad Pasha Caravanseray) with two missiles causing extensive damage to the north west corner of the building:

- 1- The north hallway of the third section and the west hallway were both destroyed. The two hallways had arched ceilings.
- 2- Three stone beams on the north side, along with two on the west, were destroyed .
- 3- Partial destruction of a sarcophagus transported from an area north of Ma'arrat Al-Numan in 1982 and placed on display in the courtyard.
- 4- The west wall of the hallway leading to the lavatories in the east has collapsed .
- 5- Structural damage in the north end of the third section .
- 6- Some clay amphorae that had been moved into the third section were destroyed.
- 7- Some mosaics displayed on the east and north sides of the hallway, across from the entrance to the third section from the north, were damaged. One mosaic in the west near the west entrance fell to the ground.

**Phase III:** Implement the plan developed with UNESCO expert to stabilize and re-enforce the damaged areas of the north west corner of the building with documentation (photos and plans):

**Workflow proceeded as follows:**

- Emergency intervention began by documenting damaged areas, creating topographic maps, and drafting a intervention plan with the support of the UNESCO expert.
- Reinforcing the walls following the same method used in the miniature model where 20x20cm knot-free first grade timber (pine) was used to create 10x20cm and 15x20cm support columns as outlined below and according to the previously completed miniature model.



1- Using first grade timber (pine) that is well-seasoned and free of soft knots to make support beams.





2- Assembling the support beams using glue and screws.



3- Taking accurate measurements to begin the assembly of the metal frame.



4- Assembling and installing the wooden frame.







5- Positioning the wooden support beams in place.









6-Wooden beams being positioned to provide support for the arch.





**Work executed by:**

Abdul Rahman al-Yahya (Engineer)

Nayef al-Qaddour, Ahmad al-Annan, Akram al-Qassoum, and  
Mohammed al-Battal (Archaeologists)

Firas al-Yahya (Journalist)

Syrian Cultural Heritage Center

On August 18th, 2018

**Report by:**

Abdul Rahman al-Yahya

Khaled Hiatlih

**Site monitors project director**

Dr. Amr Al-Azm

